

Objective: to understand the impacts of the COVID-19 health crisis on the quality of life of people living with HIV

Who are the respondents?

174 people living with HIV completed an online survey between July and November 2021.



from 23 to 80 years old
(median: 47 years old)



17% without drug coverage



27% cis women
61% cis men
12% gender-diverse people



60% income less than \$35,000/year
16% income less than \$12,000/year

Results



11% interrupted their treatment

Reasons for the interruption:
(in order of importance)

- Problems with **access to health services**
- **Fear** of COVID-19
- Problems with **current treatments**



32% were forced to disclose their HIV status

Reasons for the disclosure:

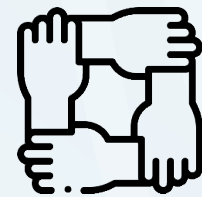
- **No information** on the reason or circumstances of the disclosure
- The next section attempts to **characterise those who had to disclose**



For 54%, COVID-19 had a **negative impact on their personal life**

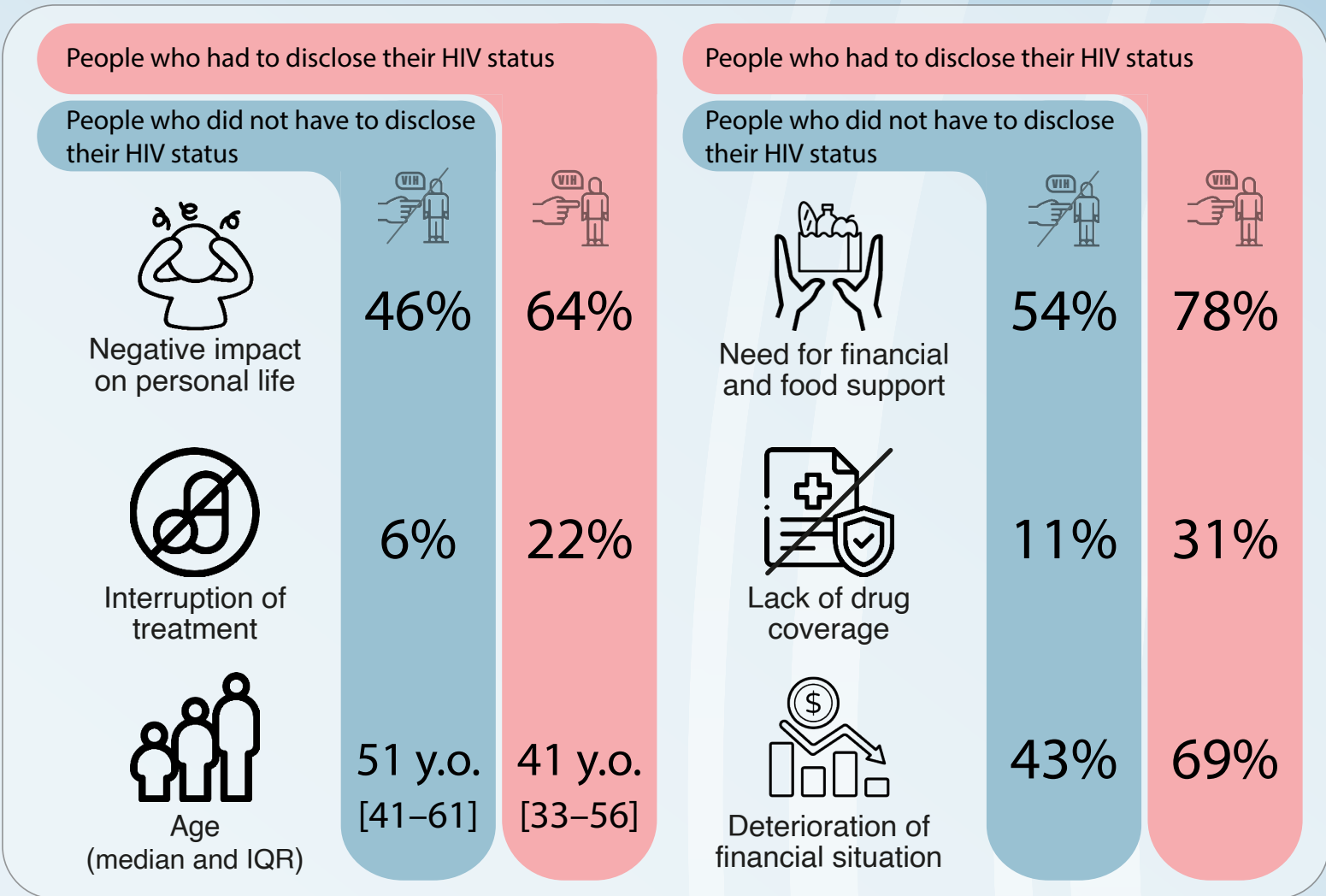


62% needed **financial or food support**



16% needed **community support for the first time**

Differences between those who did and did not have to disclose their status



All comparisons are statistically significant (Chi-2 or Mann-Whitney tests, $p < 0,05$)

Highlights

Community support was needed during the COVID-19 crisis, especially for those who had to disclose their status, often with more precarious situations than others.



The lack of access to health services has created difficult situations, even leading to interruption of HIV treatment.



EPIC is an international community-based research study to assess the impact of the COVID-19 health crisis on key populations and people living with HIV and HCV.

13,000+ survey respondents

200+ people involved

32 countries participating

10 languages used

Thank you to the people who took the time to complete the survey.
Thank you to the advisory committee composed of peers, researchers and community members for adapting the EPIC survey to Quebec realities.

